

The DALY Calculator

A graphical user interface for stochastic DALY calculation in R

— Manual version 1.2.0 —

Brecht Devleesschauwer^{1,2} **Scott McDonald**³ **Juanita Haagsma**⁴
Nicolas Praet⁵ **Arie Havelaar**^{6,7} **Niko Speybroeck**²

- ¹ Department of Virology, Parasitology and Immunology, Faculty of Veterinary Medicine, Ghent University, Merelbeke, Belgium
- ² Institute of Health and Society, Faculty of Public Health, Université catholique de Louvain, Brussels, Belgium
- ³ Centre for Infectious Disease Control, National Institute for Public Health and the Environment, Bilthoven, Netherlands
- ⁴ Department of Public Health, Erasmus Medical Center, Erasmus University, Rotterdam, Netherlands
- ⁵ Department of Biomedical Sciences, Institute of Tropical Medicine, Antwerp, Belgium
- ⁶ Centre for Zoonoses and Environmental Microbiology, National Institute for Public Health and the Environment, Bilthoven, Netherlands
- ⁷ Institute for Risk Assessment Sciences, Faculty of Veterinary Medicine, Utrecht University, Utrecht, Netherlands

Corresponding author:

Brecht.Devleesschauwer@UGent.be

Online:

<http://users.ugent.be/~bdvleess/DALYcalculator/> (DALY Calculator homepage)
<http://cran.r-project.org/package=DALY> (current version & archive)
<https://github.com/brechtdv/DALY/> (development version & bug reports)

To cite the DALY Calculator in publications, please use:

Brecht Devleesschauwer, Scott McDonald, Juanita Haagsma, Nicolas Praet, Arie Havelaar and Niko Speybroeck (2013). DALY: The DALY Calculator - A GUI for stochastic DALY calculation in R. R package version 1.2.0. <http://cran.r-project.org/package=DALY>

ABSTRACT

The disability-adjusted life year or DALY is an increasingly used measure of population health. The **DALY** package, accessible in the **R** statistical programming environment, provides a Graphical User Interface (GUI) for calculating DALYs and performing uncertainty and sensitivity analyses. The uncertainty propagation is based on Monte Carlo simulations, which are used to compute DALY credibility intervals from the uncertainty in the various input parameters. Based on these simulations, probabilistic global sensitivity analysis can be carried out to identify those input parameters that have the highest contribution to the overall uncertainty.

The GUI of the *DALY Calculator* allows for ease and flexibility, while the **R** environment enables more advanced computations and graphical functions. The underlying calculation methods are designed to promote consistency in the uncertainty analysis of DALYs. These methods are demonstrated through the inclusion of two examples from the foodborne disease burden literature (i.e., the burden of neurocysticercosis in West-Cameroon and the burden of congenital toxoplasmosis in the Netherlands). We believe that the *DALY Calculator* can become a useful tool for students, scientists and health officials involved in the quantification of public health problems.

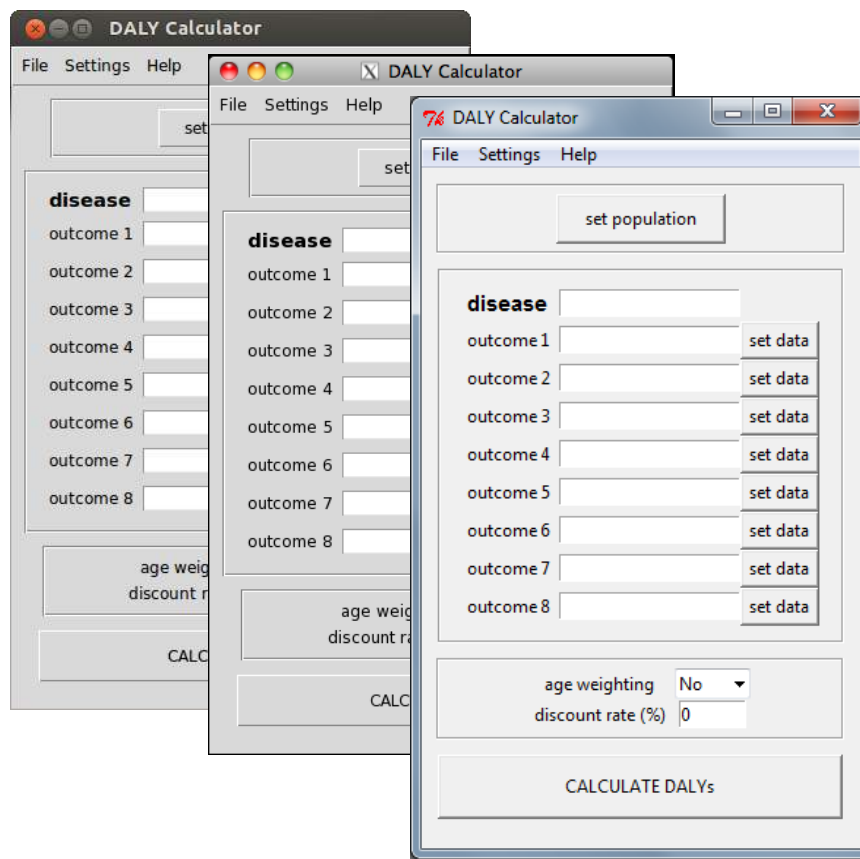


Figure 1. DALY Calculator main window in Ubuntu Linux, Mac OS X 10.6, and Windows 7

1. Introduction

The **disability-adjusted life year or DALY** is a summary measure of population health widely used in disease burden assessment studies and cost-utility analyses (Murray and Lopez, 1996; Lopez et al., 2006). DALYs represent the number of healthy life years lost due to a disease or disability, and do so by incorporating non-fatal and fatal health outcomes, calculated as the years of life lived with disability (YLD) and the years of life lost due to premature death (YLL), respectively. In order to make a direct comparison of YLDs and YLLs possible, disability weights are assigned to various degrees of disability, ranging from zero (full health) to one (worst possible health state). In addition to these disability weights, the DALY calculation requires the choice of two other social values, i.e., age weighting and time discounting. The former gives a higher weight to the healthy life years lived between the age of 9 and 54, as this period of life is considered to be socially more important than the younger and older life spans (Murray, 1994). The latter discounts the years of healthy life lived in the future, at a rate of (usually) 3%. The incorporation of a time discount rate reflects similar practices in economic assessments, and would prevent policy makers from saving resources for a possible future eradication program, instead of investing in currently available, but less effective, intervention measures (the so-called "disease eradication and research paradox"; Murray, 1994).

The formulas for calculating the YLLs and YLDs are presented in Murray (1994) and Murray and Acharya (1997), and can easily be incorporated in a spreadsheet, such as the "**DALY calculation template**"¹ prepared by the World Health Organization for its Global Burden of Disease (GBD) project (Mathers et al., 2001). This template allows the computation of YLLs and YLDs for both sexes and various age groups, which are then summarized into a single deterministic DALY measure.

The reliability of the final DALY result depends heavily on the quality of the epidemiological data, which are commonly derived from routine data collection systems, scientific literature, and expert elicitation. The estimates provided by these data sources include an inherent level of uncertainty, mainly due to sampling error, diagnostic uncertainty, and population heterogeneity. To reflect this stochastic nature, epidemiological parameters are often accompanied by a confidence or credibility interval, or represented as a probability distribution, rather than being represented by a single point estimate. **Monte Carlo simulations** have been suggested as the appropriate technique to incorporate this uncertainty in the final DALY result (de Vocht et al., 2010), which can then be presented as a point estimate with a credibility

¹ <http://www.who.int/entity/healthinfo/bodreferencedalycalculationtemplate.xls>

interval. This interval allows the assessment of the level of uncertainty in the total DALYs, and facilitates a more reliable comparison of the health impact of different diseases.

To our knowledge, however, there are **no standardized tools** available for stochastic DALY calculation. Therefore, we designed a Graphical User Interface (GUI) for calculating DALYs that allows for the incorporation of input uncertainty and the computation of a DALY credibility interval through Monte Carlo simulations. This program, the *DALY Calculator*, is designed to be used by a variety of users, with different levels of statistical skills, to allow maximum flexibility, and to promote consistency in the DALY uncertainty analysis.

The remainder of this manual is structured as follows. A description of how to obtain and install the *DALY Calculator* is given in Chapter 2. The five basic steps to calculate DALYs with the *DALY Calculator* are presented in Chapter 3. Using the table widgets of the *DALY Calculator* is described in Chapter 4. Manipulating the *DALY Calculator* output in the **R** environment is presented in Chapter 5. DALY sensitivity analysis features are presented in Chapter 6. The two built-in examples are introduced in Chapter 7. The features to save and load input data are described in Chapter 8. Current limitations and envisioned future improvements are listed in Chapter 9. Finally, an overview of the different versions of the DALY Calculator is given in Chapter 10.

The computational details of the uncertainty analysis performed by the *DALY Calculator* are outlined in Annex 1.

2. Installing and running the *DALY Calculator*

The *DALY Calculator* is developed in **R**, an open-source environment for statistical programming and graphics (R Core Team, 2013). The use of the *DALY Calculator* requires the prior installation of **R**, which can be freely downloaded from the Comprehensive R Archive Network (CRAN): <http://cran.r-project.org/>

The installation procedure under Mac OS X is more complicated. Two additional tools need to be installed:

- The **X Window System (X11)**: if this is properly installed, the file `x11.app` should appear in the Utilities folder under Applications in the Finder. If not, you can install it from your Mac OS X installation disc.
- **Tcl/Tk for X Windows**: this can be installed by downloading and installing `tcltk-8.5.5-x11.dmg` from <http://cran.r-project.org/bin/macosx/tools/>

Linux users may need to download and install the **Tktable** toolkit, which can be found through <http://packages.ubuntu.com/search?keywords=tk-table>. Ubuntu/Debian users may download and install the toolkit directly by issuing any of the following command from Terminal:

```
sudo apt-get install tk-table  
sudo apt-get install libtktable2.10
```

The **DALY** package is available on the CRAN repository, and can be installed directly from the **R** console, by calling:

```
install.packages("DALY")
```

Finally, every time the *DALY Calculator* has to be used, the **DALY** package has to be loaded in the **R** environment, by typing the following command in the **R** console (Figure 2):

```
library(DALY)
```

This call will load and attach the **DALY** package, and initiate the main window of the *DALY Calculator* (Figure 1, 3-5). To re-initiate this window, call the following function in the **R** console:

```
DALYcalculator()
```

```
R Console

R version 3.0.1 (2013-05-16) -- "Good Sport"
Copyright (C) 2013 The R Foundation for Statistical Computing
Platform: x86_64-w64-mingw32/x64 (64-bit)

R is free software and comes with ABSOLUTELY NO WARRANTY.
You are welcome to redistribute it under certain conditions.
Type 'license()' or 'licence()' for distribution details.

R is a collaborative project with many contributors.
Type 'contributors()' for more information and
'citation()' on how to cite R or R packages in publications.

Type 'demo()' for some demos, 'help()' for on-line help, or
'help.start()' for an HTML browser interface to help.
Type 'q()' to quit R.

[Previously saved workspace restored]

> library(DALY)
Loading required package: tcltk
Loading required package: grid

Welcome to DALY Calculator 1.2.0 (2013-07-06)

Type 'DALYmanual()' for help on using the DALY Calculator
Type 'DALYcalculator()' for re-initializing the DALY Calculator

> |
```

Figure 2. Initializing the DALY Calculator

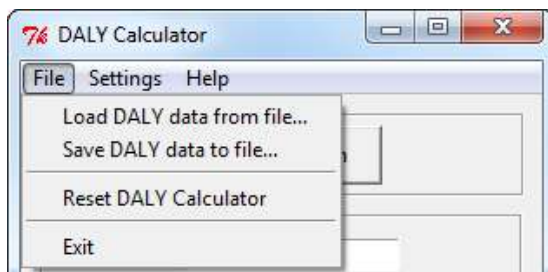


Figure 3. DALY Calculator 'File' menu



Figure 4. DALY Calculator 'Settings' menu

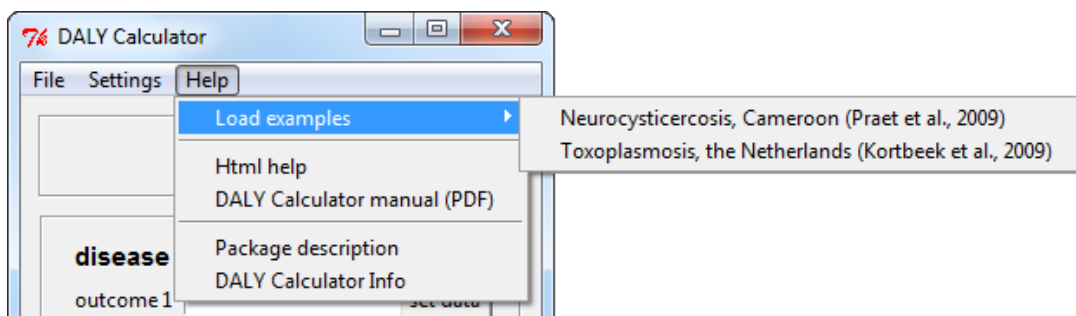


Figure 5. DALY Calculator 'Help' menu

3. Getting started with the *DALY Calculator*

The *DALY Calculator* is designed to be used in an **outcome-based** as well as an **agent-based** approach. Depending on the approach, YLDs, YLLs, DALYs and incident cases and deaths can be computed for a combination of up to eight different disease categories of one outcome, or of up to eight different outcomes of one agent.

According to the GBD studies, the **incidence-based** approach was favored over the prevalence-based approach. The current version of the *DALY Calculator* is able to calculate DALYs for a basic incidence-based disease model with well-defined incidence and/or mortality rates per disease category or outcome.

The default age groups used by the *DALY Calculator* are the **five age groups** used by the GBD 1990 study: 0-4; 5-14; 15-44; 45-59; 60+ (Lopez and Murray, 1996). At least one combination of sex and age group has to be set in order to proceed with the DALY calculation.

To compute YLDs, YLLs, DALYs, incident cases and deaths, **five steps** have to be followed (as illustrated in Figure 6). These steps will be explained using one of the two built-in examples (The burden of *Taenia solium* cysticercosis in Cameroon; Praet et al., 2009). Users can load this example by selecting:

Help > Load examples > Neurocysticercosis, Cameroon (Praet et al., 2009)

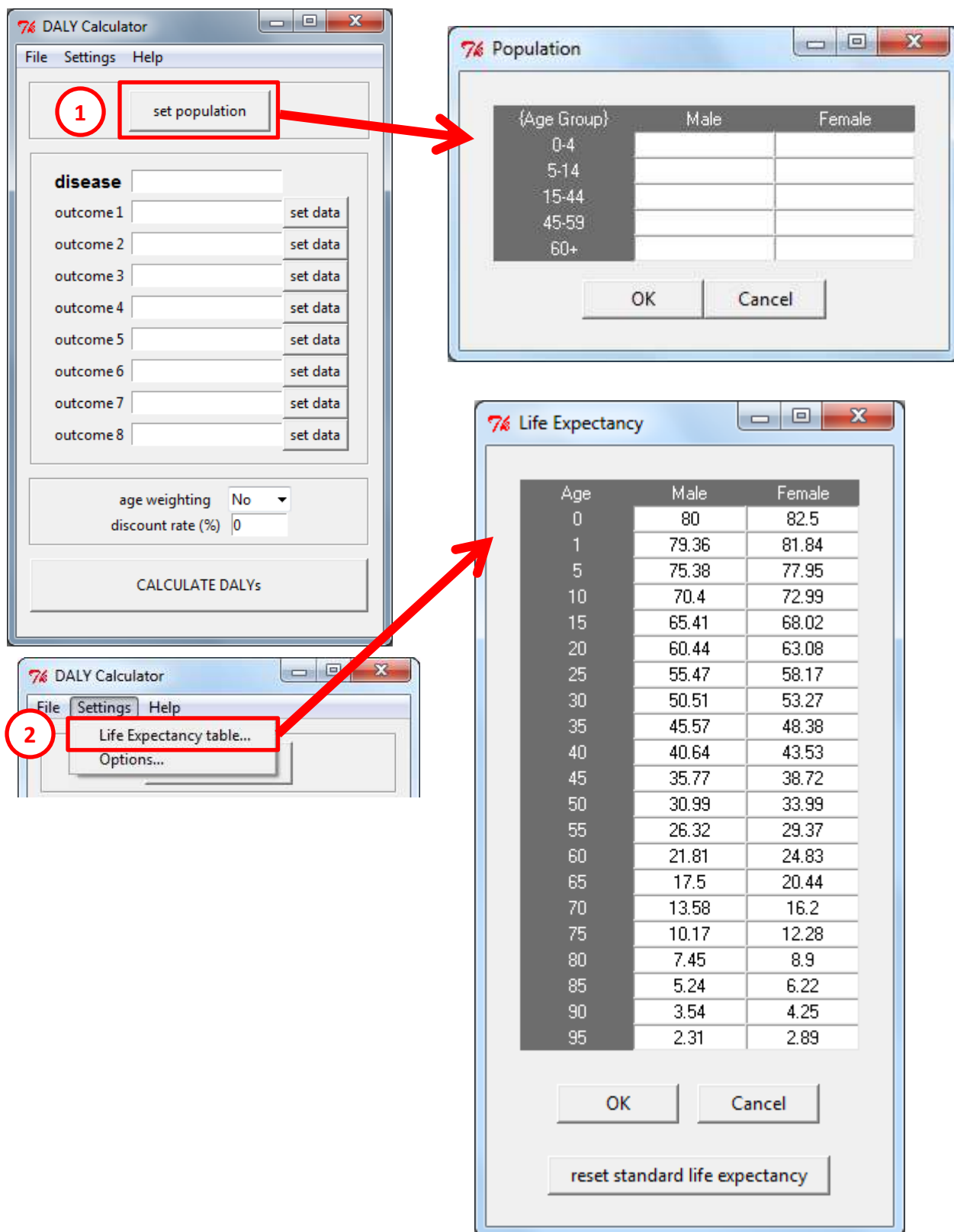


Figure 6. DALY calculation with the DALY Calculator

7% DALY Calculator

File Settings Help

set population

disease

outcome 1 **3** set data

outcome 2 set data

outcome 3 set data

outcome 4 set data

outcome 5 set data

outcome 6 set data

outcome 7 set data

outcome 8 set data

4 age weighting No

discount rate (%) 0

5 CALCULATE DALYs

Data: disease > outcome 1

incidence: cases/1000 persons/year Gamma Age and Sex

	M.Shape	M.Rate	F.Shape	F.Rate
0-4				
5-14				
15-44				
45-59				
60+				

onset: age in years Fixed Age and Sex

	Male	Female
0-4		
5-14		
15-44		
45-59		
60+		

DW treated: range [0-1] Beta Age and Sex

	M.Alpha	M.Beta	F.Alpha	F.Beta
0-4				
5-14				
15-44				
45-59				
60+				

DW untreated: range [0-1] Beta Age and Sex

	M.Alpha	M.Beta	F.Alpha	F.Beta
0-4				
5-14				
15-44				
45-59				
60+				

mortality: deaths/1000 persons/year Gamma Age and Sex

	M.Shape	M.Rate	F.Shape	F.Rate
0-4				
5-14				
15-44				
45-59				
60+				

duration: years Fixed Age and Sex

	Male	Female
0-4		
5-14		
15-44		
45-59		
60+		

average age at death: age in years Fixed Age and Sex

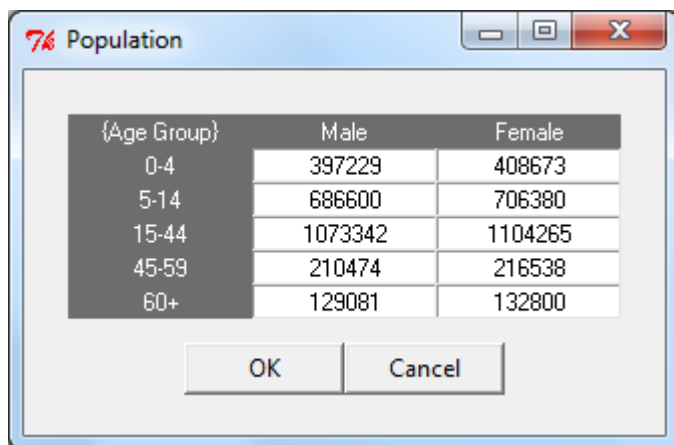
	Male	Female
0-4		
5-14		
15-44		
45-59		
60+		

OK Cancel

Figure 6. DALY calculation with the DALY Calculator (continued; M = Male, F = Female)

① Set the population table

Clicking the "set population" button opens the population window, where the number of males and females, per age group, can be entered. At least one combination of sex and age group has to be set.



The screenshot shows a window titled "Population" with a table containing population data for West-Cameroon. The table has three columns: "{Age Group}", "Male", and "Female". The rows represent age groups: "0-4", "5-14", "15-44", "45-59", and "60+". Below the table are "OK" and "Cancel" buttons.

{Age Group}	Male	Female
0-4	397229	408673
5-14	686600	706380
15-44	1073342	1104265
45-59	210474	216538
60+	129081	132800

Figure 7. Population of West-Cameroon, stratified by sex and age

② Set the life expectancy table

The default life expectancy table used by the *DALY Calculator* is the Coale and Demeny model life-table West, level 26 and 25, which has a life expectancy at birth of 80 for males and 82.5 for females (Murray, 1994). However, the user can define his own life expectancy table, by accessing the 'Life Expectancy' window through the 'Settings' menu:

Settings > Life Expectancy

Praet et al. (2009) applied the standard life expectancy table, which is the default life expectancy table of the DALY Calculator. Therefore, no action is required during this step.

③ Set the input parameters, per disease category or outcome

After entering the disease and outcome names, the epidemiological data and disability weights can be entered by clicking the "set data" button. For every parameter, the user can specify the **distribution** by selecting one of following:

- Beta-Pert** (mode; min; max)
- Beta** (alpha; beta)
- Gamma** (shape; rate)
- Normal** (mu; sigma)
- Lognormal-geometric** (logmean; logsigma)
- Lognormal-arithmetic** (mean; sigma)
- Uniform** (min; max)
- Fixed**

Next, the user has to select the specific **level of stratification** for every parameter. The following four stratification levels are available:

- Age and Sex** (i.e., full stratification)
- Age** (i.e., data is stratified by age group, but not by sex)
- Sex** (i.e., data is stratified by sex, but not by age group)
- None** (i.e., no stratification, data applies to total population)

For calculating the **YLDs and incident cases**, the following tables have to be completed:

- Incidence:** number of new cases per 1,000 persons per year
- Treatment:** proportion of patients receiving proper treatment; range [0-1]
- Onset of the disease:** age of onset in years
- Duration of the disease:** duration in years
- Disability Weight for treated cases:** range [0-1]
- Disability Weight for non-treated cases:** range [0-1]

For calculating the **YLLs and deaths**, the following tables have to be completed:

- Mortality:** number of deaths per 1,000 persons per year
- Average age at death:** age at death in years; based on these values, the *DALY Calculator* will compute the corresponding life expectancies according to the Life Expectancy table.

By default, the distributions of incidence and mortality will be set to "Gamma", those of the proportion treated and the disability weights to "Beta", and those of onset, duration and average age at death to "Fixed"; the level of stratification for all parameters is set to full stratification (i.e., "Age and Sex").

76 Data: Neurocysticercosis > Epilepsy

incidence: cases/1000 persons/year					Gamma	Age and Sex
	M.Shape	M.Rate	F.Shape	F.Rate		
0-4	47.3	6.671	47.3	7.617		
5-14	47.3	9.522	47.3	14.756		
15-44	47.3	17.141	47.3	28.093		
45-59	47.3	13.321	47.3	28.574		
60+	47.3	7.617	47.3	13.321		

treatment: proportion [0-1]		Beta	None
	Alpha	Beta	
	267	733	

onset: age in years		Fixed	Age
	Value		
0-4	2.5		
5-14	9.95		
15-44	26.99		
45-59	51.94		
60+	73.6		

duration: years		Fixed	Age and Sex
	Male	Female	
0-4	1.4	1.6	
5-14	2	3.1	
15-44	3.6	5.9	
45-59	2.8	6	
60+	1.6	2.8	

DW treated: range [0-1]		Beta	Age
	Alpha	Beta	
0-4	1.5	35	
5-14	1.5	21.6	
15-44	1.5	21.6	
45-59	1.5	21.6	
60+	1.5	21.6	

DW untreated: range [0-1]		Beta	Age
	Alpha	Beta	
0-4	3	27.3	
5-14	3	17	
15-44	3	17	
45-59	3	17	
60+	3	17	

mortality: deaths/1000 persons/year		Gamma	None
	Shape	Rate	
	3.049	12.321	

average age at death: age in years		Fixed	Age
	Value		
0-4	2.5		
5-14	10		
15-44	30		
45-59	52.5		
60+	77.5		

OK Cancel

Figure 8. Epidemiological parameters for the DALY calculation of Neurocysticercosis in Cameroon, based on Praet et al. (2009)

④ Set the social values:

Age weighting yes or no

Discount rate (%) ...

The default social weighting values applied by the *DALY calculator* are uniform age weights (i.e., no age weighting) and a zero discount rate. However, the user is given the possibility to define the required set of social values, and to alter these values to assess their influence on the final result.

age weighting Yes ▼

discount rate (%) 3

Figure 9. DALY Calculator main window, with social values set to full age-weighting and a 3% discount rate, as applied by Praet et al. (2009)

⑤ CALCULATE DALYs

Clicking the "CALCULATE DALYs" button will read the data and compute the YLDs, YLLs, DALYs and incident cases and deaths per disease category/outcome. Standard, the overall mean, median and a 95% credibility interval of these results will be printed to the **R** Console, and a histogram of total DALYs, with corresponding credibility interval, will be displayed (Figure 10).

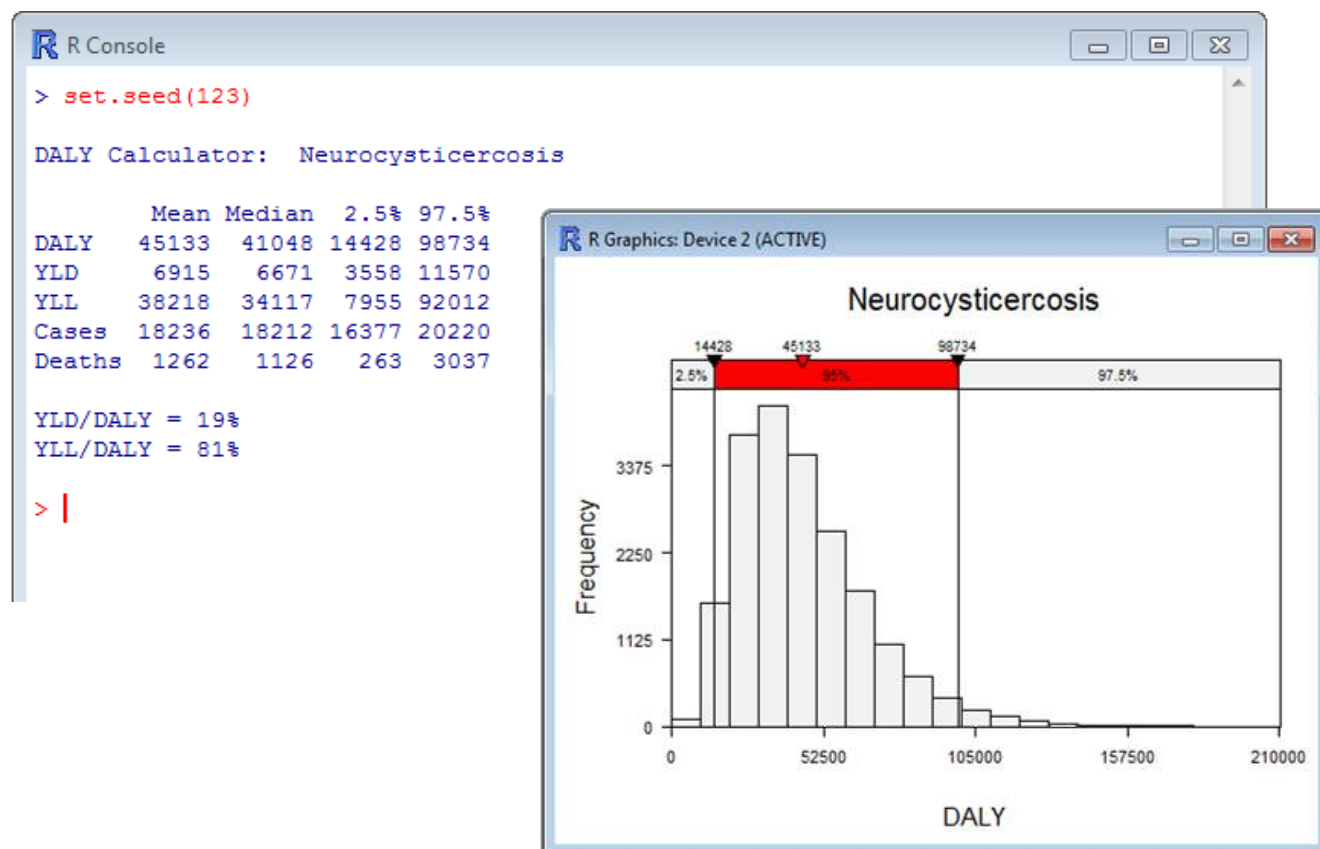


Figure 10. Standard output of the DALY calculation for *Taenia solium* Neurocysticercosis in Cameroon (based on Praet et al., 2009)

A more detailed output of the DALY calculation can be obtained by changing the output settings in the 'Options' window (Figure 11):

Settings > Options

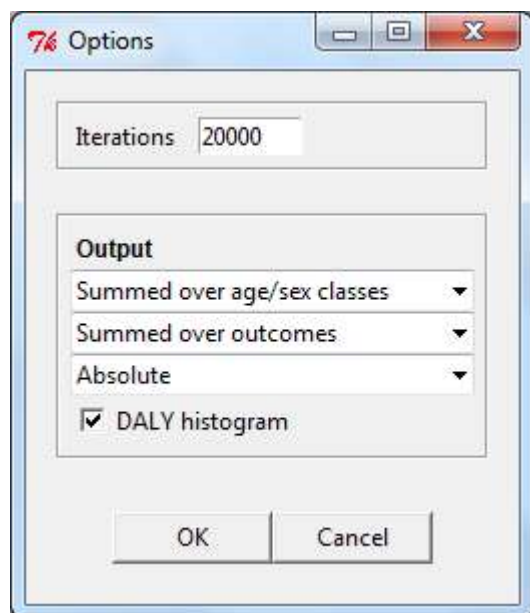


Figure 11. Options window

The following settings are possible:

- Age/Sex classes
 - Results summed over different age/sex classes (default)
 - Results shown per age/sex class
- Outcomes
 - Results summed over different outcomes (default)
 - Results shown per outcome
- Absolute/Relative
 - Absolute values (default)
 - Relative values, i.e., per 1,000 population

More advanced output, both numerically as graphically, can be obtained by saving the *DALY Calculator* output to an **R** object, and manipulating this object in the **R** environment (see Chapter 5 for more details and examples).

4. Using the *DALY Calculator* table widgets

All tables of the *DALY Calculator* are built using the **Tktable** toolkit. The navigation and editing properties of this tabulator toolkit differ from those of common spreadsheet documents, which may cause confusion. Some clues are therefore useful to get started:

- Keyboard navigation is only possible through the arrow keys; pressing the RETURN (ENTER) key will not change focus to the underlying cell, but will append blank space to the currently active cell.
- To select all values of a column (row), you can click the column (row) header. Selecting all values in the table is possible by clicking the header in the top-left corner of the table. Figure 12 gives some examples.
- Removing the value of one or more cells can be done by selecting the corresponding cells and pressing CTRL+X (also on Mac).
- Pasting values into a table (eg, after copying them from a spreadsheet document), can be done by selecting the top-left cell of the desired range, and pressing CTRL+V (also on Mac).

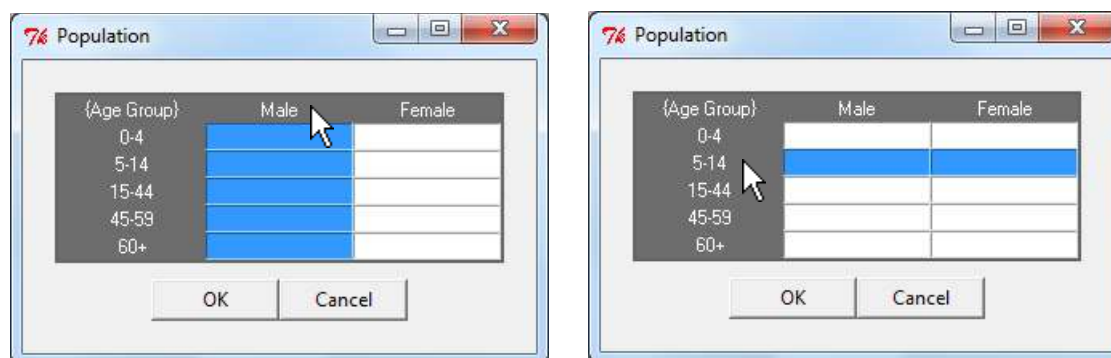


Figure 12. Selecting columns/rows in *DALY Calculator* table widgets.

5. Handling *DALY Calculator* output in the R environment

Instead of clicking the "CALCULATE DALYs" button in the *DALY Calculator* main window, the DALY calculation process may also be invoked by calling the `getDALY()` function from the R console. This function initiates the Monte Carlo simulation process, and returns the simulated DALYs, YLDs, YLLs and incident cases and deaths. Of course, this will only take place if the data have been entered, as outlined before.

The `getDALY()` function takes two arguments, `aw` and `dr`, that specify the age weighting constant and time discount rate, respectively. If these values are not specified, they will be taken from the GUI (see Figure 9).

The results of the DALY calculation process can be stored in an object, say `x`, as follows:

```
x <- getDALY()
```

Since `aw` and `dr` were not specified, these values were taken from the GUI. If one wishes to specify the social weighting values directly from the command-line, the values from the GUI will be over-ruled. For instance, one could specify to use *no age weighting* and a *3% time discount rate* as follows:

```
x <- getDALY(aw = FALSE, dr = 0.03)
```

5.1. Structure of the object returned by `getDALY()`

The `getDALY()` function returns an object of class `'DALY'`, which inherits from class `'list'`. The returned object is a list containing the following elements:

- `i` For each outcome `i`, an unnamed list containing simulated DALYs, YLDs, YLLs and incident cases and deaths, per age/sex class;
- `pop` A matrix containing the population data;
- `name` The name of the disease.

Each list of simulated results for a certain outcome `i` contains the following six elements:

- `DALY` 3-dimensional array of simulated DALYs;
- `YLD` 3-dimensional array of simulated YLDs;

<code>YLL</code>	3-dimensional array of simulated YLLs;
<code>cases</code>	3-dimensional array of simulated incident cases;
<code>deaths</code>	3-dimensional array of simulated deaths;
<code>name</code>	The name of the outcome;
<code>input</code>	A list containing the simulated samples (arranged in 3-dimensional arrays) from all input distributions.

The three dimensions of `DALY`, `YLD`, `YLL`, `cases`, `deaths` and the `input` elements, are, respectively, *iteration*, *age group*, and *sex*.

The `input` element is a list of eight arrays, named as follows:

<code>inc</code>	incidence rate;
<code>trt</code>	proportion treated;
<code>ons</code>	age at disease onset;
<code>dur</code>	disease duration;
<code>DWt</code>	disability weight for treated cases;
<code>DWn</code>	disability weight for non-treated cases;
<code>mrt</code>	mortality rate;
<code>dth</code>	age at death.

To view the structure of the returned object, one may call the following command:

```
str(x)
```

5.2. Methods for objects of class 'DALY'

Four methods have been made available for the objects of class `'DALY'`:

<code>print()</code>	print results, summed over age/sex classes;
<code>summary()</code>	print results, per age/sex class;
<code>hist()</code>	histogram of total DALYs, YLDs, YLLs, cases or deaths;
<code>aggregate()</code>	aggregate simulations by outcome, age/sex, or both.

In both the `print()` and `summary()` methods, the user can specify whether or not to print the results per outcome (argument `outcome`), and whether or not to print the results relative to

the population (i.e., per 1000 population; argument `relative`). By default, `outcome` and `relative` are set to `FALSE`.

The argument `digits` of both the `print()` and `summary()` methods controls the number of decimal digits to be printed. By default, `digits` equals zero. The argument `prob` of the `print()` method sets the range of the printed credibility interval. By default, `prob` equals 0.95.

For example, if one wishes to see the results of the Neurocysticercosis example expressed relative to the population size, and with 90% credibility intervals, one would call:

```
> print(x, relative = TRUE, prob = 0.90, digits = 2)
```

```
DALY Calculator: Neurocysticercosis
```

```
Total population: 5065382
```

	Mean	Median	5%	95%
DALY	8.82	8.00	3.37	17.00
YLD	1.36	1.31	0.78	2.10
YLL	7.47	6.63	2.08	15.65
Cases	3.60	3.59	3.29	3.92
Deaths	0.25	0.22	0.07	0.52

```
YLD/DALY = 19%
```

```
YLL/DALY = 81%
```

The `hist()` method plots a standardized histogram of simulated results. By default, argument `xval` is set to `"DALY"`, argument `prob` to 0.95, and argument `central` to `"mean"`. The histogram shown in Figure 10 is a result of these default settings.

If one wishes to see a histogram of, say, the number of deaths in the Neurocysticercosis example, with an indication of the median and a 90% credibility interval, one would call:

```
hist(x, xval = "deaths", prob = 0.90, central = "median")
```

For more info on the available methods for class `"DALY"`, please visit the R help pages for the corresponding methods. To access the R help page for, say, `print.DALY()`, call `?print.DALY`.

5.3. Handling objects of class 'DALY'

The strength of the implementation of the *DALY Calculator* is that its results can be directly manipulated from within the **R** environment. This allows users to obtain virtually any possible numerical or graphical output they desire. Of course, this also requires a more advanced knowledge of the **R** programming language. Some examples might therefore be useful.

Each of the elements from `x` may be extracted using the `[]` operator. Named elements may also be extracted using the `$` operator. For example, we can view the population matrix of the Neurocysticercosis example as follows:

```
> x[["pop"]] # equivalent to 'x$pop'
      [,1] [,2]
[1,] 397229 408673
[2,] 686600 706380
[3,] 1073342 1104265
[4,] 210474 216538
[5,] 129081 132800
```

Likewise, the simulated DALYs due to epilepsy (i.e., outcome 1 of the Neurocysticercosis example), may be extracted as follows (note the double indexing):

```
x[[1]][["DALY"]]
```

The `aggregate()` method is a utility function used to sum up simulated results by outcome, age/sex, or both (controlled by argument `by`). This method returns a list of aggregated DALYs, YLDs, YLLs, incident cases and deaths, as well as the population matrix and disease name.

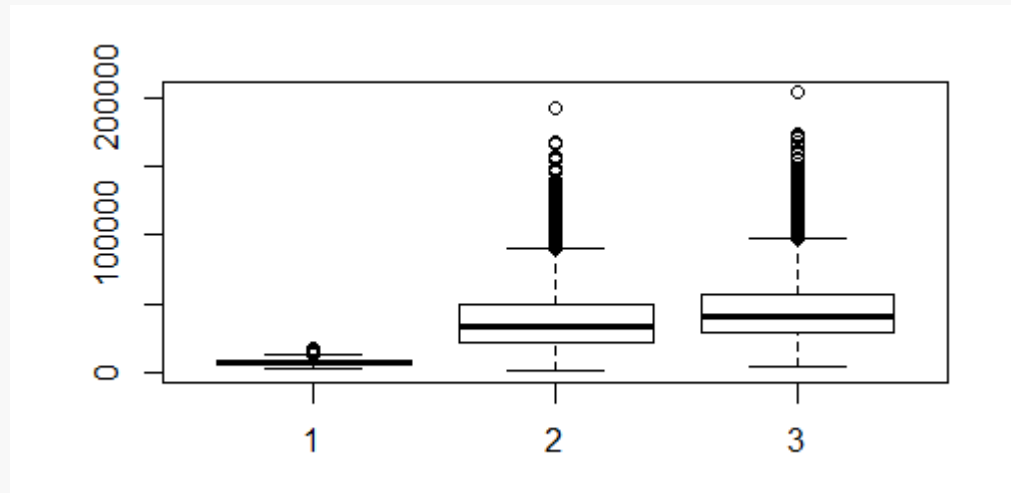
```
aggregate(x, by = "outcome") # aggregate by outcome, sum over age/sex class
aggregate(x, by = "class")   # aggregate by age/sex class, sum over outcomes
aggregate(x, by = "total")   # sum over outcomes and age/sex classes
```

For more information on the `aggregate()` method, please visit its **R** help page:

```
?aggregate.DALY
```

As an example, suppose one would like to have a boxplot of total YLDs, YLLs and DALYs from the Neurocysticercosis example:

```
y <- aggregate(x, by = "total")
boxplot(y[[1]]$YLD, y[[1]]$YLL, y[[1]]$DALY)
```



6. Sensitivity analysis

Sensitivity analysis studies how the uncertainty in the overall DALY estimate can be apportioned to the different sources of uncertainty in the input parameters (Vose, 2008). These results can therefore help to identify those input parameters that cause significant uncertainty in the overall DALY estimate and that therefore may be the focus of further research if one wishes to reduce the uncertainty in the overall estimate.

The `sensitivity()` function implements a probabilistic global sensitivity analysis of the overall DALY estimate, in which the analysis is conducted over the full range of plausible input values (hence *global*), determined by the specified uncertainty distributions (hence *probabilistic*). Three methods are available, i.e., based on mapped regression coefficients, standardized regression coefficients, and Spearman's rank correlation coefficients. The `sensitivity()` function is defined as follows:

```
sensitivity(x, method = c("regression", "rank"), mapped = TRUE,
           plot = TRUE, main = "Sensitivity analysis", ...)
```

Specifying `method = "regression"` will perform a linear regression-based sensitivity analysis. Here, the simulated overall DALY estimates will be regressed against the simulated values for

the stochastic input parameters (using `lm()`). To facilitate comparison, the independent terms are standardized such that they are normally distributed with mean zero and standard deviation one (using `scale()`).

If `mapped = TRUE`, the dependent term is not standardized, such that the resulting mapped regression coefficients correspond to the change in overall DALY given one standard deviation change in the corresponding input parameter. If `mapped = FALSE`, the dependent term is standardized, such that the resulting standardized regression coefficients correspond to the number of standard deviations change in overall DALY given one standard deviation change in the corresponding input parameter.

Specifying `method = "rank"` will perform a rank correlation-based sensitivity analysis. Here, Spearman's rank correlation coefficients will be calculated between the simulated overall DALY estimates and the simulated values for each of the stochastic input parameters (using `cor.test()`).

For example, a sensitivity analysis of the Neurocysticercosis model, based on mapped regression coefficients, could be performed as follows:

```
> set.seed(123)
> x <- getDALY(aw = TRUE, dr = 0.03)
> sensitivity(x, method = "regression", mapped = TRUE)
```

Call:

```
lm(formula = daly ~ ., data = data)
```

Residuals:

Min	1Q	Median	3Q	Max
-5954.7	-698.0	-9.4	697.4	5170.4

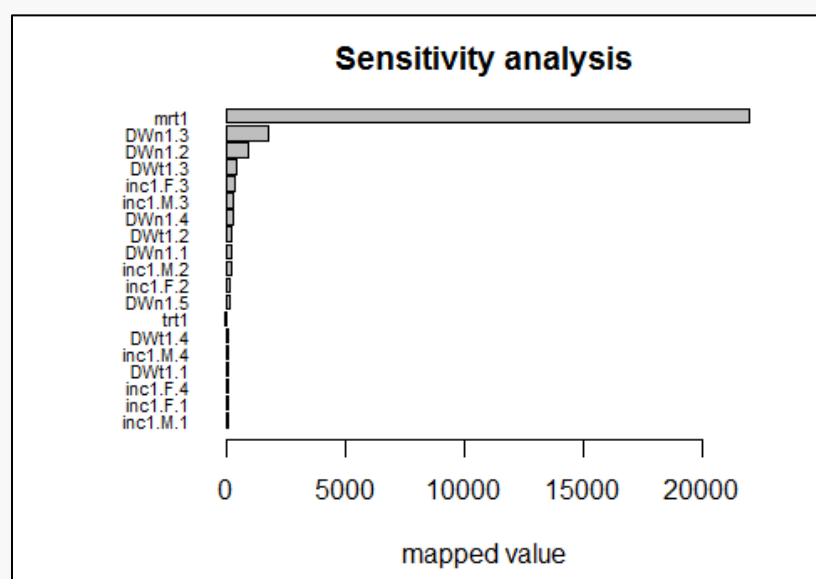
Coefficients:

	Estimate	Std. Error	t value	Pr(> t)
(Intercept)	45132.819	8.011	5634.164	< 2e-16 ***
incl.M.1	19.798	8.014	2.470	0.01351 *
incl.M.2	149.588	8.014	18.665	< 2e-16 ***
incl.M.3	275.811	8.016	34.409	< 2e-16 ***
incl.M.4	37.124	8.015	4.632	3.65e-06 ***
incl.M.5	14.351	8.015	1.790	0.07339 .
incl.F.1	21.062	8.014	2.628	0.00859 **
incl.F.2	144.769	8.014	18.064	< 2e-16 ***
incl.F.3	288.485	8.015	35.995	< 2e-16 ***
incl.F.4	33.616	8.015	4.194	2.75e-05 ***
incl.F.5	4.559	8.014	0.569	0.56947

trt1	-72.530	8.013	-9.051	< 2e-16	***
DWt1.1	35.729	8.014	4.458	8.31e-06	***
DWt1.2	201.790	8.015	25.177	< 2e-16	***
DWt1.3	398.369	8.016	49.699	< 2e-16	***
DWt1.4	52.205	8.014	6.514	7.47e-11	***
DWt1.5	5.076	8.016	0.633	0.52655	
DWn1.1	159.864	8.013	19.950	< 2e-16	***
DWn1.2	891.846	8.015	111.273	< 2e-16	***
DWn1.3	1736.451	8.014	216.674	< 2e-16	***
DWn1.4	259.261	8.016	32.342	< 2e-16	***
DWn1.5	100.915	8.014	12.593	< 2e-16	***
mrt1	21902.003	8.015	2732.596	< 2e-16	***

Signif. codes: 0 '***' 0.001 '**' 0.01 '*' 0.05 '.' 0.1 ' ' 1

Residual standard error: 1133 on 19977 degrees of freedom
Multiple R-squared: 0.9974, Adjusted R-squared: 0.9974
F-statistic: 3.43e+05 on 22 and 19977 DF, p-value: < 2.2e-16



From the above results, we learn that the uncertainty in mortality rate has the highest influence on the overall uncertainty. Indeed, one standard deviation change in mortality rate would lead to a difference of more than 20,000 DALYs in the overall DALY estimate.

Further note that the names of the different input parameters are constructed as a combination of the input element (see 5.1), the sex (in case of sex stratification), and the age group (in case of age stratification).

7. Built-in examples

To demonstrate the calculation process of the *DALY Calculator*, two DALY calculation examples are derived from the foodborne disease literature, and are built-in to the *DALY Calculator*:

- "The burden of *Taenia solium* cysticercosis in Cameroon" (Praet et al., 2009); and
- "Congenital toxoplasmosis and DALYs in the Netherlands" (Kortbeek et al., 2009).

These examples can be loaded by accessing the 'Help' menu, selecting 'Load examples', and selecting the required examples (Figure 2.3):

Help > Load examples > Neurocysticercosis, Cameroon (Praet et al., 2009)

Help > Load examples > Toxoplasmosis, the Netherlands (Kortbeek et al., 2009)

7.1. The burden of *Taenia solium* cysticercosis in Cameroon

Praet and colleagues (2009) estimated the health impact of *T. solium* by calculating the DALYs lost due to neurocysticercosis (NCC)-associated epilepsy, as this is the main health outcome of NCC. Non-uniform age weights and a 3% discount rate were selected as DALY parameters, and YLLs were calculated based on the standard life expectancy. The authors presented the following results:

Mean	2.5%	97.5%	% of total DALYs	
DALY	45838	14108	103469	100
YLD	6821	2765	12878	15
YLL	39017	8196	95513	85

The authors did not directly provide probability distributions for the incidence and mortality of NCC-associated epilepsy, but estimated these values through the following formulas:

$$I = P * N / D \quad (1)$$

$$M = P * N * C \quad (2)$$

Where,

I = Incidence of NCC-associated epilepsy;

P = Prevalence of epilepsy; $P \sim \text{Beta}(67, 1791)$;

N = Proportion NCC-associated epilepsy cases; $N \sim \text{Uniform}(0.236, 0.315)$;

D = Duration of epilepsy; $D \sim \text{Fixed}$, differs by sex and age group;

M = Mortality due to NCC-associated epilepsy;

C = Case-fatality ratio of epilepsy; $C \sim \text{Beta}(3.2, 124.8)$.

Since both incidence and mortality are examples of count data, an underlying gamma distribution was presumed. Monte Carlo simulations were used to generate a compiled distribution of incidence and mortality, based on equations (1) and (2). These compiled distributions were then used to estimate the parameters of the gamma distributions, based on maximum likelihood. This was done using the `fitdistr()` function, available in the **MASS** package (Venables and Ripley, 2002). The results of this process are presented in Figure 8.

As the mortality rate presented by Praet et al. (2009) applied to the entire study population, the stratification level was set accordingly (i.e., "None"). Likewise, the "Age" stratification level was selected for the disability weights, as they were only stratified by age category (Figure 8).

After entering all required data in the *DALY Calculator*, the following results were obtained (taken from Figure 10):

Mean	2.5%	97.5%	% of total DALYs	
DALY	45133	14428	98734	100
YLD	6915	3558	11570	19
YLL	38218	7955	92012	81

These results and their corresponding credibility intervals resemble the values obtained by Praet and colleagues (2009). The difference in percentage of DALYs attributed to YLDs versus YLLs, is due to the fact that the *DALY Calculator* presents the means of the proportions, whereas the authors presented the proportion of the means:

6915 / 45133 = 0.15
 38218 / 45133 = 0.85

7.2. Congenital toxoplasmosis and DALYs in the Netherlands

The second built-in example computes the burden of congenital toxoplasmosis in the Netherlands, as presented by Kortbeek et al. (2009). These authors applied uniform age weighting and no time discounting, and used the Dutch life expectancy table, which has an average life expectancy at birth of 79. DALYs were calculated for the seven most important health outcomes of congenital toxoplasmosis:

- Fetal loss (≥ 24 weeks)
- Clinical symptoms in first year of life:
 - Chorioretinitis
 - Intracranial calcification
 - Hydrocephalus

- Central nerve system abnormalities
- Neonatal death
- Asymptomatic at birth:
 - Chorioretinitis later in life

Kortbeek et al. (2009) estimated the most likely burden of congenital toxoplasmosis to be 2,303 DALYs. By adding up the minimum and maximum estimates of the different outcomes, a lower bound of 818 and an upper bound of 6,713 DALYs was obtained. This range represents the possible extremes of the DALYs due to congenital toxoplasmosis, but should not be interpreted as a credibility interval.

The only sources of uncertainty included in the authors' calculation model were the incidence and mortality rates of the various outcomes, for which most likely, low and high estimates were presented. In our example, we used a Beta-Pert distribution to represent this uncertainty, and interpreted the "most likely" values as the mean values of the Beta-Pert:

$$\bar{x} = \text{"most likely"}$$

$$m = (6\bar{x} - \max - \min)/4$$

$$s = \frac{\max - \min}{6}$$

$$\alpha = \left(\frac{\bar{x} - \min}{\max - \min} \right) * \left\{ \frac{(\bar{x} - \min) * (\max - \bar{x})}{s^2} - 1 \right\}$$

$$\beta = \left(\frac{\max - \bar{x}}{\bar{x} - \min} \right) * \alpha$$

$$\text{Beta-Pert}(m, \min, \max) = \text{Beta}(\alpha, \beta) * (\max - \min) + \min$$

Where,

\bar{x} = mean of the Beta-Pert distribution

m = mode of the Beta-Pert distribution

s = standard deviation of the Beta-Pert distribution

α = shape 1 of the Beta distribution

β = shape 2 of the Beta distribution

The authors did not present different estimates for male and females, therefore the "Age" stratification level was selected for all parameters.

After loading the toxoplasmosis example in the *DALY Calculator*, the life expectancy table will be adapted by changing the values for age 0 to 79, for both males and females. The social values will be set automatically to those applied by Kortbeek and colleagues (2009).

The following results were generated by the *DALY Calculator* (after setting the seed to 123):

Mean	2.5%	97.5%	% of total DALYs	
DALY	2355	1362	3722	100
YLD	1293	724	2128	56
YLL	1062	316	2212	44

Again, the results are similar to those presented by the authors. In addition, the *DALY Calculator* provides a genuine 95% credibility interval, which is, of course, narrower than the range of extremes presented by the authors. Through the **R** environment, it is possible to obtain the extremes of the vector of DALYs generated by the *DALY Calculator*. This can be done by applying the `min()` and `max()` functions to the aggregated '**DALY**' object (see Chapter 5):

```
set.seed(123)    # sets the seed to '123', for reproducibility reasons
x <- getDALY()   # assign DALY Calculator output to object 'x'
y <- aggregate(x, by = "total") # sums results over outcomes and age/sex

min(y$DALY)      # get minimum DALY
[1] 732.33

max(y$DALY)      # get maximum DALY
[1] 5466.01
```

Of course, these results will depend on the number of iterations applied. The higher the number of iterations, the more extreme the minimum and maximum values will be, until the absolute minimum and maximum is reached.

8. Saving and loading input data

An additional feature of the *DALY Calculator* is the possibility to save the entered values for the epidemiological parameters to an RData image file. This function is available through:

File > Save DALY data to file...

Thus created (and edited) RData files can be loaded into the *DALY Calculator* by accessing:

File > Load DALY data from file...

Alternatively, saving and loading RData files can be done directly from the **R** console:

```
saveDALYdata() # save data to .RData file
readDALYdata() # load data from .RData file
```

9. Current limitations and future work

The current version of the *DALY Calculator* allows basic DALY calculation and uncertainty analysis, which could be useful for a variety of users. However, this first release has some restrictions, which might limit a more advanced performance:

- The current version of the *DALY Calculator* is designed to calculate a **basic incidence-based disease model**, with well-defined incidence and mortality rates per disease category or outcome. The incorporation of conditional probabilities or the calculation of complex disease models is currently not possible;
- The *DALY Calculator* only allows the simultaneous assessment of **up to eight disease categories or outcomes**. This is sufficient for most diseases or agents, but could be limiting for certain more complex models;
- Until now, the *DALY Calculator* only allows the simultaneous use of a **maximum of five age groups**;
- Currently, **only two DALY calculation examples** are built-in.

Efforts are being made to clear these limitations, and solutions should be provided in the next major releases of the *DALY Calculator*. User suggestions will be substantially taken into account during the further development of the *DALY Calculator*.

10. Version history

DALY 1.2.0 – Release date 06/07/2013

New features

- Introduction of a `sensitivity()` function;
- Function `getDALY()` gains arguments `aw` and `dr`.

Performance improvements

- The *DALY Calculator* now also includes the simulated values from the input distributions;
- Several functions have been updated to make proper use of the `match.arg()` functionality;
- The `'DALY'` database on the search path is replaced by a `'DALYenv'` environment in the **DALY** package.

Bug fixes

- The `readDALYdata()` now correctly reads `.RData` files when specified through the `file` argument;
- All instances of `INC` and `MRT` have now consistently been renamed to `cases` and `deaths`, respectively;
- The DALY Calculator manual has been rebuilt to fix issues with `pdffonts`.

DALY 1.1.0 – Release date 27/08/2012

New features

- Introduction of an `aggregate()` method for objects of class `'DALY'`.

Performance improvements

- Each window has a "save or cancel" policy;
- The basic *DALY Calculator* output consists of simulated DALYs, YLLs, YLDs, incident cases and deaths per outcome and per age/sex class;
- `print()`, `summary()` and `hist()` methods have been updated;
- Saving and loading data is implemented through `.RData` files instead of `.txt` files.

Deprecated and defunct

- Text files with input data can no longer be read by the *DALY Calculator*;
- As a result, the *DALY Calculator* Excel template is defunct.

Installation

- DALY 1.1.0 can be installed and run under Mac OS X, Linux and Windows operating systems. The *DALY Calculator* is only launched after attaching the package in an interactive session, which means that the package can be installed without having the required tools installed. Loading the package under Mac OS X and Linux requires the prior installation of the X Window System (X11) and the Tcl/Tk toolkit.

Bug fixes

- Global variables removed; all variables needed by the *DALY Calculator* are stored in a separate 'DALY' database;
- Welcome messages implemented through `packageStartupMessage()` ;
- Problems with installation of `BWidget` resolved by replacing `tkwidget(parent, type = "ComboBox", ...)` by `ttkcombobox()` ;
- `set.seed()` can be used to select the seed used for the random number generation processes within the *DALY Calculator*;
- A same window can be opened only once; calling a window opening function while the corresponding window is already opened will return focus to the existing window;
- Evaluation of input data improved by using regular expressions;
- Empty cells in the 'Life Expectancy' window produce an error message, while they are still allowed in other windows;
- 'Iterations' can only be set to a strictly positive integer value;
- On closing the *DALY Calculator* main window, all other *DALY Calculator* windows will close as well;
- Checkboxes may also be set by clicking the corresponding text.

DALY 1.0.0 - Release date 23/03/2011

Features

- Calculate DALYs, YLDs, YLLs and Deaths for a simple incidence-based disease model;
- Able to include up to eight outcomes;
- Five age-groups included, i.e., 0-4; 5-14; 15-44; 45-59; 60+;
- Life expectancy table can be defined by user; standard table is the Coale and Demeny model life-table West, level 26 and 25;
- Two examples included, i.e., Neurocysticercosis in Cameroon and Toxoplasmosis in the Netherlands;
- Saving/loading data through .txt file;

- The basic *DALY Calculator* output consists of simulated DALYs, YLLs, YLDs and deaths per outcome, aggregated over age/sex classes;
- `print()`, `summary()` and `hist()` methods for objects returned by the *DALY Calculator*.

DALY 0.0.0

A first version of the *DALY Calculator* was developed in November 2010, but was never released. This version consisted of a single 'data' window, and was only able to reproduce the Neurocysticercosis example.

ANNEX 1. DALY calculation and uncertainty analysis

Traditionally, three types of uncertainty are distinguished (Bilcke et al., 2011):

- Methodological uncertainty: which normative modeling approach should be used?
- Structural uncertainty: what structural aspects should be incorporated to capture the relevant characteristics of the phenomenon being investigated?
- Parameter uncertainty: what is the true value of each model parameter?

The *DALY Calculator* mainly deals with parameter uncertainty. Other types can be dealt with by running multiple simulations (i.e., performing scenario analyses):

- Methodological uncertainty: different normative views exist regarding the application of **age weighting** and **time discounting** in DALY calculations. The *DALY Calculator* easily allows to calculate results based on different scenarios of age weighting and time discounting (see Chapter 3, Step 4).
- Structural uncertainty: the definition of a **disease model** is one of the most important steps preceding the actual DALY calculation. In case of uncertainty or controversy regarding the disease model, different scenarios can be run and their results compared.

The *DALY Calculator* allows for the incorporation of parameter uncertainty at two different levels, i.e., **parameter uncertainty *sensu stricto***, and **stratification uncertainty**.

Evidence for parameters is often only available through population samples, leading to sampling error in the reported parameters. The evidence of available parameter values may furthermore be of questionable quality, due to imperfect test characteristics, or worse, low-quality study designs. Sometimes, parameter values are even completely lacking. In these cases, parameter values should be represented by appropriate probability distributions reflecting their uncertainty, rather than by mere point estimates. The *DALY Calculator* allows the user to specify for each parameter one of the following probability distributions:

Beta-Pert (mode; min; max)

Beta (alpha; beta)

Gamma (shape; rate)

Normal (mu; sigma)

Lognormal-geometric (logmean; logsigma)

Lognormal-arithmetic (mean; sigma)

Uniform (min; max)

Fixed

As the available parameter values are often not available per combination of age group and sex, the total uncertainty would be underestimated if the exact level of data stratification would not be taken in account. This can be demonstrated by a simple example:

Suppose parameter X is sampled from a distribution with variance σ^2 . We need this parameter for males and females, but the distribution we derived from literature makes no distinction between sexes, and is thus not stratified by sex (for the sake of the example, we will forget about age group stratification). If we do not take in account stratification uncertainty, we will simulate two times from the same distribution, thereby obtaining a sequence of random values for X_m and X_f . As for regular DALY calculations, our end result will be the sum of both parameters (see Annex 1). The variance of our end result will then be:

$$\text{Var}(X_m + X_f) = \text{Var}(X_m) + \text{Var}(X_f) + 2 * \text{Cov}(X_m, X_f) = 2\sigma^2$$

Since X_m and X_f were independent simulations from a same distribution, their covariance is zero.

The correct approach, however, would be to draw one sequence of simulations from the distribution, and then multiply it by two. The variance of the end result will then be:

$$\text{Var}(2 * X) = 4\sigma^2$$

Not accounting for stratification uncertainty would thus underestimate the overall uncertainty by a factor of two. Likewise, not accounting for stratification uncertainty due to n strata, would lead to an n -fold underestimation of overall uncertainty.

The *DALY Calculator* enables users to specify the level of stratification of the input parameters, and incorporates this information in the DALY calculation process. Four possibilities are provided:

- Age and Sex** (i.e., full stratification)
- Age** (i.e., data is stratified by age group, but not by sex)
- Sex** (i.e., data is stratified by sex, but not by age group)
- None** (i.e., no stratification, data applies to total population)

For the case where the data applies to the total population (i.e., no stratification), a single random value is generated per iteration and applied to each age and sex class. If the data is only stratified by age (sex), a random value is generated during each iteration per age (sex) class, and applied to all sex (age) classes. Finally, in case of full stratification, during each iteration, a random value will be generated for each combination of age group and sex, reflecting the maximum level of detail of the respective input parameter.

The DALY uncertainty analysis implemented by the *DALY Calculator* is performed through Monte Carlo simulations. This method iteratively simulates random values for each of the epidemiological parameters and disability weights, according to their user-defined distributions. During each iteration, these random values are incorporated in a calculation of incident cases and deaths, and YLDs and YLLs, which can be summed up to DALYs. The calculation of incident cases, deaths, YLDs and YLLs is given by:

$$Cases_{ijkl} = rpois(pop_{ij} * inc_{ijkl}) \quad (1)$$

$$Deaths_{ijkl} = rpois(pop_{ij} * mrt_{ijkl}) \quad (2)$$

$$YLD_{ijkl} = Cases_{ijkl} * (trt_{ijkl} * DWt_{ijkl} + \{1 - trt_{ijkl}\} * DWn_{ijkl}) * \textbf{Formula}(ons_{ijkl}, dur_{ijkl}) \quad (3)$$

$$YLL_{ijkl} = Deaths_{ijkl} * 1 * \textbf{Formula}(aad_{ijkl}, lxp_{ijkl}) \quad (4)$$

Where,

i = sex;

j = age group;

k = outcome;

l = iteration ($l = 1, ..., n$);

$Cases_{ijkl}$ = simulated incident cases for sex i , age group j and outcome k ;

$Deaths_{ijkl}$ = simulated incident deaths for sex i , age group j and outcome k ;

YLD_{ijkl} = simulated YLDs for sex i , age group j and outcome k ;

YLL_{ijkl} = simulated YLLs for sex i , age group j and outcome k ;

$rpois(\lambda)$ = **R** function which generates a random value based on a Poisson distribution with mean λ ;

pop_{ij} = population belonging to sex i and age group j ;

inc_{ijkl} = randomly generated incidences for sex i , age group j and outcome k ;

trt_{ijkl} = randomly generated treatment rates for sex i , age group j and outcome k ;

DWt_{ijkl} = randomly generated Disability Weights–treated for sex i , age group j and outcome k ;

DWn_{ijkl} = randomly generated Disability Weights–untreated for sex i , age group j and outcome k ;

ons_{ijkl} = randomly generated ages at disease onset for sex i , age group j and outcome k ;

dur_{ijkl} = randomly generated disease durations for sex i , age group j and outcome k ;

mrt_{ijkl} = randomly generated mortalities for sex i , age group j and outcome k ;

aad_{ijkl} = randomly generated ages at death for sex i , age group j and outcome k ;

lxp_{ijkl} = calculated life expectancies for sex i , age group j and outcome k .

The **Formula(a,L)** function used in equations (3) and (4) is the solution of the integral used to calculate the years of life lived with disability or the years of life lost due to premature mortality for one individual. The integral for calculating age-weighted and time-discounted YLLs or YLDs is given by Murray (1994):

$$\int_{x=a}^{x=a+L} Cxe^{-\beta x} e^{-r(x-a)} dx \quad (5)$$

Where,

- a = age of onset *or* age at death;
- L = disease duration *or* life expectancy at age a ;
- C = age-weighting correction constant ($C = 0.1658$);
- β = parameter from age-weighting function ($\beta = 0.04$);
- r = discount rate.

In order to allow the calculation of uniformly age-weighted DALYs, an **age weighting modulation factor** (K) is introduced, which can be either one (non-uniform age weights) or zero (uniform age weights, i.e., no age-weighting) (Murray and Acharya, 1997):

$$\int_{x=a}^{x=a+L} KCxe^{-\beta x} e^{-r(x-a)} dx \quad (6)$$

The solution of integral (6) gives us the general form of the YLD and YLL formula:

$$\begin{aligned} \frac{KCe^{ra}}{(r+\beta)^2} [e^{-(r+\beta)(L+a)} \{-(r+\beta)(L+a) - 1\} \\ - e^{-(r+\beta)a} \{-(r+\beta)a - 1\}] + \frac{1-K}{r} (1 - e^{-rL}) \end{aligned} \quad (7)$$

When r approaches zero (i.e., no time-discounting), the limit of equation (7) becomes:

$$\begin{aligned} \frac{KCe^{-\beta a}}{\beta^2} [e^{-\beta L} \{-\beta(L+a) - 1\} - (-\beta a - 1)] \\ + (1-K)L \end{aligned} \quad (8)$$

For the case where both r and K are zero (i.e., no time-discounting and no age-weighting), equation (8) equals L , the disease duration (for the calculation of YLDs) or the life expectancy at age a (for the calculation of YLLs).

This process of simulating YLD and YLL values is iteratively repeated for each combination of sex and age group (i,j) within each outcome k . By summing these values, a DALY matrix is obtained per age/sex class (i,j) and outcome k :

$$DALY_{ijkl} = YLD_{ijkl} + YLL_{ijkl} \quad (9)$$

Based upon these vectors, posterior summary statistics can be calculated for incident cases and deaths, and YLDs, YLLs and DALYs, per outcome and age/sex class. Summing these vectors over age group i , sex j , and/or outcome k , will lead to aggregated results, as returned by the `aggregate()` method. For example, summary statistics of total DALYs, such as those given by the default `print()` method, can be obtained by summing up the simulated results over all outcomes and age/sex classes:

$$DALY_l = \sum_i \sum_j \sum_k DALY_{ijkl} \quad (10)$$

The implementation of the above-mentioned features is primarily written in the **R** programming language, with additional support from **Tcl/Tk** (using the **tcltk** package; R Core Team, 2013), to design the GUI. In order to speed up the computation process, the *DALY Calculator* interacts with the **C++** programming language, which is used to randomly generate the epidemiological input values (through **R** random number generation functions), and to calculate the YLDs, YLLs and incident cases and deaths, based on equations (1) to (4). These results are then sent back to the **R** environment, where they are summed up to obtain DALYs and processed into their corresponding list elements. Finally, the output of the results and their graphical representation is handled by **R**, which is optimized towards these tasks.

REFERENCES

Bilcke J, Beutels P, Brisson M, Jit M (2011). Accounting for methodological, structural, and parameter uncertainty in decision-analytic models: a practical guide. *Medical Decision Making* **31**(4), 675-692.

de Vocht F, Higgerson J, Oliver K, Verma A (2010). Incorporating uncertainty in aggregate burden of disease measures: an example of DALYs-averted by a smoking cessation campaign in the UK. *Journal of Epidemiology and Community Health* **65**(9), 751-756.

Kortbeek LM, Hofhuis A, Nijhuis CDM, Havelaar AH (2009). Congenital toxoplasmosis and DALYs in the Netherlands. *Memórias de Instituto Oswaldo Cruz* **104**(2), 370-373.

Lopez AD, Mathers CD, Ezzati M, Jamison DT, Murray CJL (2006). *Global burden of disease and risk factors*. Oxford University Press, New York, USA, pp. 475.

Mathers CD, Vos T, Lopez AD, Salomon J, Ezzati M (2001). *National Burden of Disease Studies: a Practical Guide*. Edition 2.0. Global Program on Evidence for Health Policy. World Health Organization, Geneva, Switzerland.

Murray CJL (1994). Quantifying the burden of disease: the technical basis for disability-adjusted life years. *Bulletin of the World Health Organization* **72**(3), 429-445.

Murray CJL, Lopez AD (1996). *The Global Burden of Disease: a comprehensive assessment of mortality and disability from diseases, injuries and risk factors in 1990 and projected to 2020*. Harvard University Press, Cambridge, UK, pp. 990.

Murray CJL, Acharya AK (1997). Understanding DALYs. *Journal of Health Economics* **16**(6), 703-730.

Praet N, Speybroeck N, Manzanedo R, Berkvens D, Nforinwe DN, Zoli A, Quet F, Preux P-M, Carabin H, Geerts S (2009). The disease burden of *Taenia solium* cysticercosis in Cameroon. *PLoS Neglected Tropical Diseases* **3**(3), e406.

R Core Team (2013). *R: A language and environment for statistical computing*. R Foundation for Statistical Computing, Vienna, Austria. URL <http://www.R-project.org/>.

Venables WN, Ripley BD (2002). *Modern Applied Statistics with S*. Fourth Edition. Springer, New York, USA. ISBN 0-387-95457-0.

Vose D (2008). *Risk Analysis: a quantitative guide*. Third Edition. John Wiley & Sons, Chichester, UK. ISBN 978-0-470-51284-5.